

# THOMPSON HOMES, INC. #17

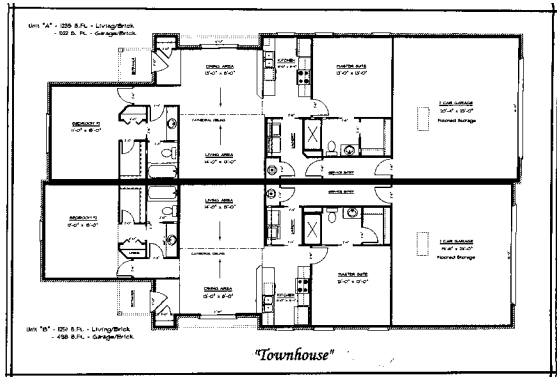


## “ELMHURST”

2535 TRIPLE CROWN WAY • THOROBRED CROSSING  
OFF BITTLE ROAD

**HIGHLIGHTS:**

- 2 Bedrooms
- Vaulted Ceiling Living Room
- 2 Car Garage
- Appliances
- Maintenance Free Exterior
- Floored Attic Storage
- 2 Full Baths
- Convenient Location



# Thompson Homes Inc.

316 Frederica Street • Owensboro, KY 42301  
(270) 926-1740



Sun Vinyl Replacement Windows  
Factory Showroom  
1515 East 18th St. • Owensboro, KY 42303  
270-684-0691 • 1-800-328-1151